



MOBILE LAUNDRY

Powered by **GIRBAU**

Portable
Laundry
Solutions

**NEW-CONCEPT
PLUG&PLAY
VENDED LAUNDRY**

Mobile Laundry by Girbau is the best solution for operating on new sites like petrol stations, supermarkets and shopping centres.

It generates positive synergies with your



**MOBILE
LAUNDRY** Portable
Laundry
Solutions
Powered by **GIRBAU**

PLUG&PLAY BUSINESS

TOP QUALITY MATERIALS

360° solutions in container format

GIRBAU



Land Transport
Models

**MACHINES
CAN BE PERSONALISED
BY THE CUSTOMER**



Maritime Transport
Models



T3x6
(2.90 metres wide by 6 metres long)



T3x9
(2.90 metres wide by 9 metres long)



M20' x 2
(4.70 metres wide by 5.90 metres long)



M20' OPEN
(2.35 metres wide by 5.90 metres long)

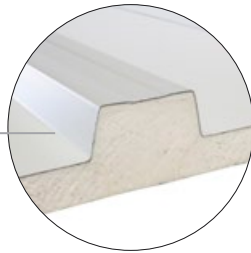
MODEL M20' OPEN
 For maritime transportation

ROOF

The system for collecting rainwater from the roof prevents any possibility of leaks or infiltration of water.

CEILING

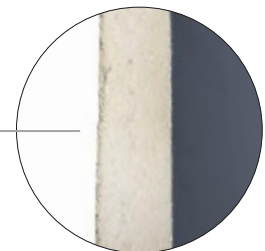
Ceiling with 40mm thick insulated sandwich panelling.



FLOATING GLASS

30mm movement tolerance of the floating glass makes it resistant to movements deriving from transportation.

LED lighting



WALLS

Sides enclosed with 30mm thick insulated sandwich.



VANDAL-PROOF TOP ALIGNMENT

The machines are anchored at the inner bottom. The top steel plate overlaying the machine prevents any possibility of removing it from the front in the event of vandalism.

CHASSIS

Galvanised steel chassis painted with polyurethane paint. Paint used for painting vehicles. Clients can choose any RAL colour they desire. Optional: STAINLESS STEEL chassis.

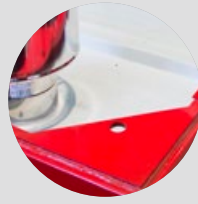


MACHINE ROOM VENTILATION

MARITIME TRANSPORTATION



40 foot HQ



Thanks to its sturdy structure, the use of lifting beams is not required for transportation.

Maritime transportation is via an 40 foot HQ shipping container.

INSTALLATIONS

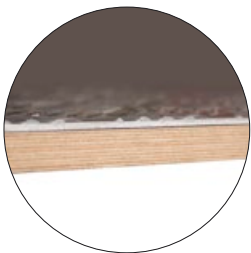
Electrical, plumbing and gas installations are performed using high quality materials, optimised for easy maintenance and arranged to maximise the use of space.

ELECTRIC PANEL

The machines are protected with thermal magnetic circuit breakers for every 3 machines.

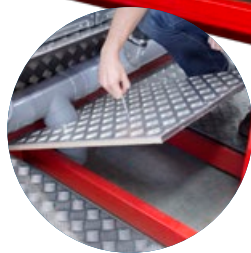


Optional:
Descaler and
water heater.



FLOOR

The floor of the machine room is 100% Finland Birch phenolic boarding coated with steel plate. The same materials are used for the floor of refrigerated trucks.



CONNECTION HATCHES

As a result of the hatches fitted into the floor, during setup a tolerance is permitted in the connection of the 110 mm drain, the mains water and the electricity.



LOCKS

Rear vandal-proof lock.

MODEL T3X9
 For land transport

AUTOMATIC DOOR
 Option



304PLUS STAINLESS STEEL CHASSIS
 Option



HEAT PUMP
 Option



VENDING SPACE



PROPANE GAS HOUSING
 Option



LAND TRANSPORT



Thanks to its tough structure, it does not require lifting beams for shipping.

Land transport is on an open trailer.

UTILITIES

The electrical, plumbing and gas installations are made of high-quality materials, designed for easy maintenance and laid out to take maximum advantage of space.

ELECTRIC PANEL

The machines are protected by circuit breaker panels. One for every 3 machines.



DECALCIFIER

Option



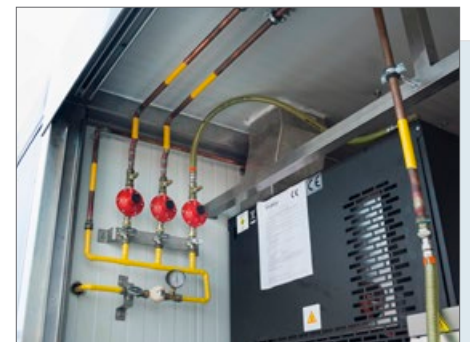
WATER HEATER

Option



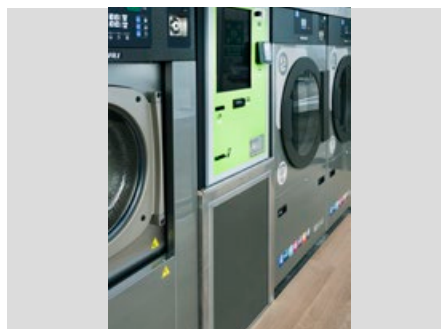
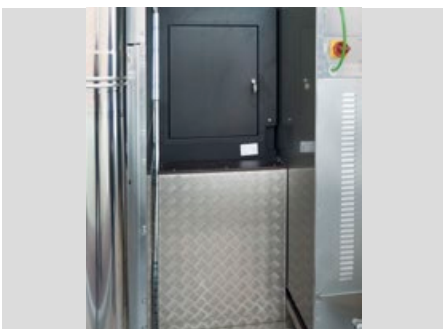
GAS INSTALLATION

Option



READY FOR PAYMENT STATION

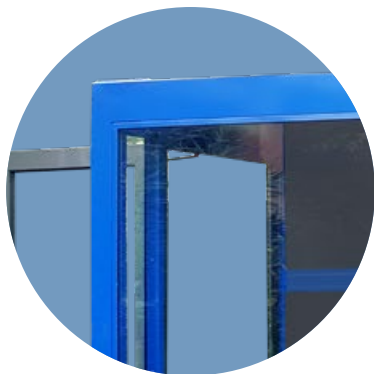
Option



MODEL T3X6
For Ground transportation

GLASS DOORS

Glass door 5x5mm laminated, special width for disabled access



DOORS

Side doors doors with aluminium frame and double handle with spring locking plate.



BANQUETA

One Stainless steel two-slat bench.



GLASS

Laminated glass, 6x6 mm



GROUND TRANSPORTATION

Thanks to its sturdy structure, the use of lifting beams is not required for transportation.

Ground transportation is via an open trailer truck.



LP GAS CONTAINER

Propane gas container prepared for 3+3 LP gas bottles.



FLOOR
Floor phenolic board, 100% Finnish birch, covered in vinyl parquet.



TABLE
Stainless steel table with phenolic top



POTENTIAL LOCATIONS
LOCATIONS
Uses and Businesses



Car wash



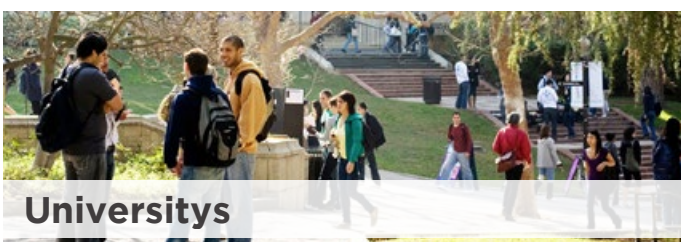
Supermarkets



Gas stations



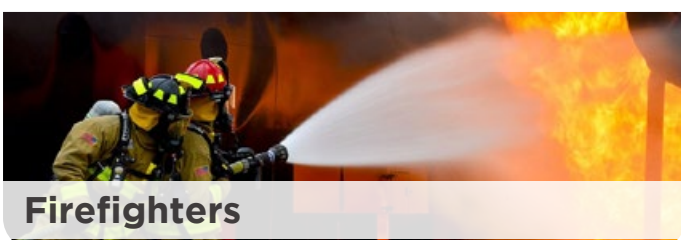
Campsites



Universities



Investors



Firefighters



Hotels - OPL laundry extension



Motorway service areas



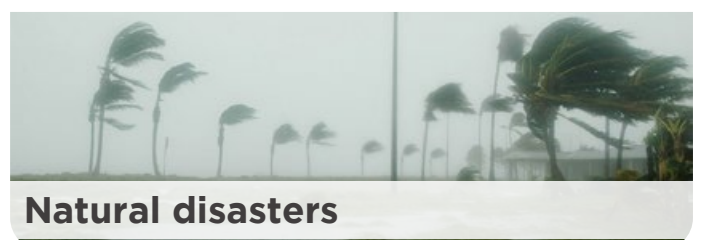
Events - Rental of materials



Public parkings



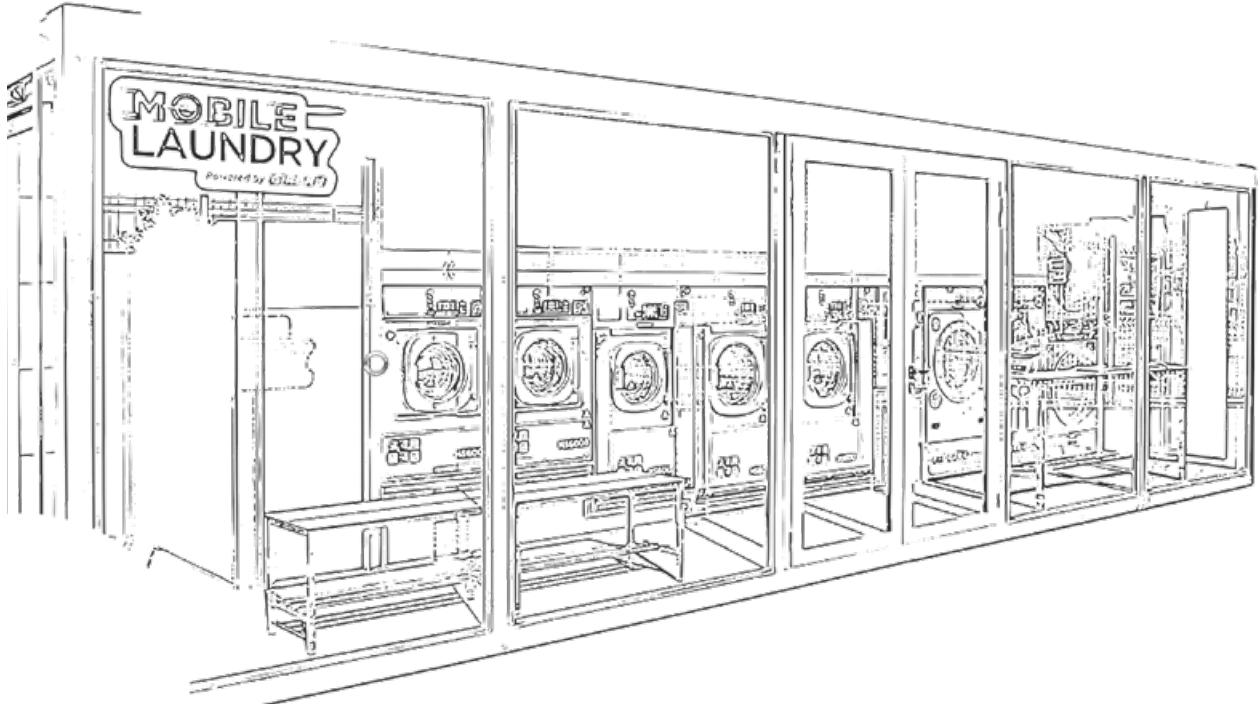
Army



Natural disasters

Configure your mobile laundry options

Model	T3x6	T3x9	M20x2"	M20"A
Dimensions	2,95x6x2,35m	2,95x9x2,35m	4,70x5,90x2,35m	2,35x5,90x2,35m
Reference	989574	991745	991752	989871
Set up for STANDARD machinery 1 HS6017 - CC - ME - H / 1 HS6013 - CC - ME - H 2 HS6008 - CC - ME - H / 2 ED340 - CC - ME - E	✓	✓	✓	✓
STANDARD finish - Container structure: Galvanised steel with epoxy painture. - Side closure in 3 cm thick sandwich panel, color RAL7022, - Top in Sandwich panel joint seal roof 3 cm thick. - Floor phenolic board, 100% Finnish birch, covered in vinyl parquet. - Laminated glass, 6x6 mm. - Glass door 5x5mm laminated, special width for disabled access. - Side doors doors with aluminium frame and double handle with spring locking plate. - To enter the machine room (at the back) 2 sandwich panel sliding doors. - Partition of the machine room in sandwich panel: 6 x 2.56 x 3mm. - Installation of all the machines. - Alignment of machines for control (top alignment). - Electrical and plumbing installation.	✓	✓	✓	✓
STANDARD furnishings One Stainless steel two-slat bench. Stainless steel table with phenolic top.	✓	✓	✓	
STANDARD ventilation Machines Room - bottom and top grille at each side, Front room: - Lateral wall - grill at bottom. - Lateral door - grill at the top.	✓	✓	✓	
LED lighting	✓	✓	✓	✓
STANDARD chassis Galvanised steel	✓	✓	✓	✓
STANDARD power supply (220V 50Hz)	✓	✓	✓	✓
Main options RSP				
Other machinery setups (design can be required)	CONSULT			
Water heater accumulator	✓	✓	✓	✓
Ready for Payment Station	✓	✓	✓	✓
LP GAS container (Propane GAS dryers)	✓	✓	✓	✓
GAS Installation (GAS dryers)	✓	✓	✓	✓
304 PLUS STAINLESS STEEL chassis	✓	✓	✓	✓
Front entrance ramp 2000 X 2000 X 2.8mm aluminium special ramp	✓	✓	✓	✓
Inside signage pack	✓	✓	✓	✓
Outside labeling pack	✓	✓	✓	✓
Decalcifier Clark valve 48L decalcifier	✓	✓	✓	✓
Heat pump Toshiba	✓	✓	✓	N/A
Front canopy and EXTERIOR lighting	CONSULT			
Automation pack (alarms, cameras and door opening)	CONSULT			
Non-slip mat for outdoors	✓	✓	✓	CONSULT
Automatic front door	CONSULT			N/A
IoT pack	CONSULT			



Much of the success of a laundry depends on its location.

SUPERMARKETS, PETROL STATIONS, SHOPPING CENTRES
AND EVENTS ARE EXCELLENT LOCATIONS.

Washing and drying time, about 45-50min, is about the same as it takes to do a weekly shop at the supermarket.

Installing a vended laundry service close to a shopping centre generates positive synergies for both businesses.

GIRBAU

girbau.com

